






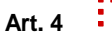

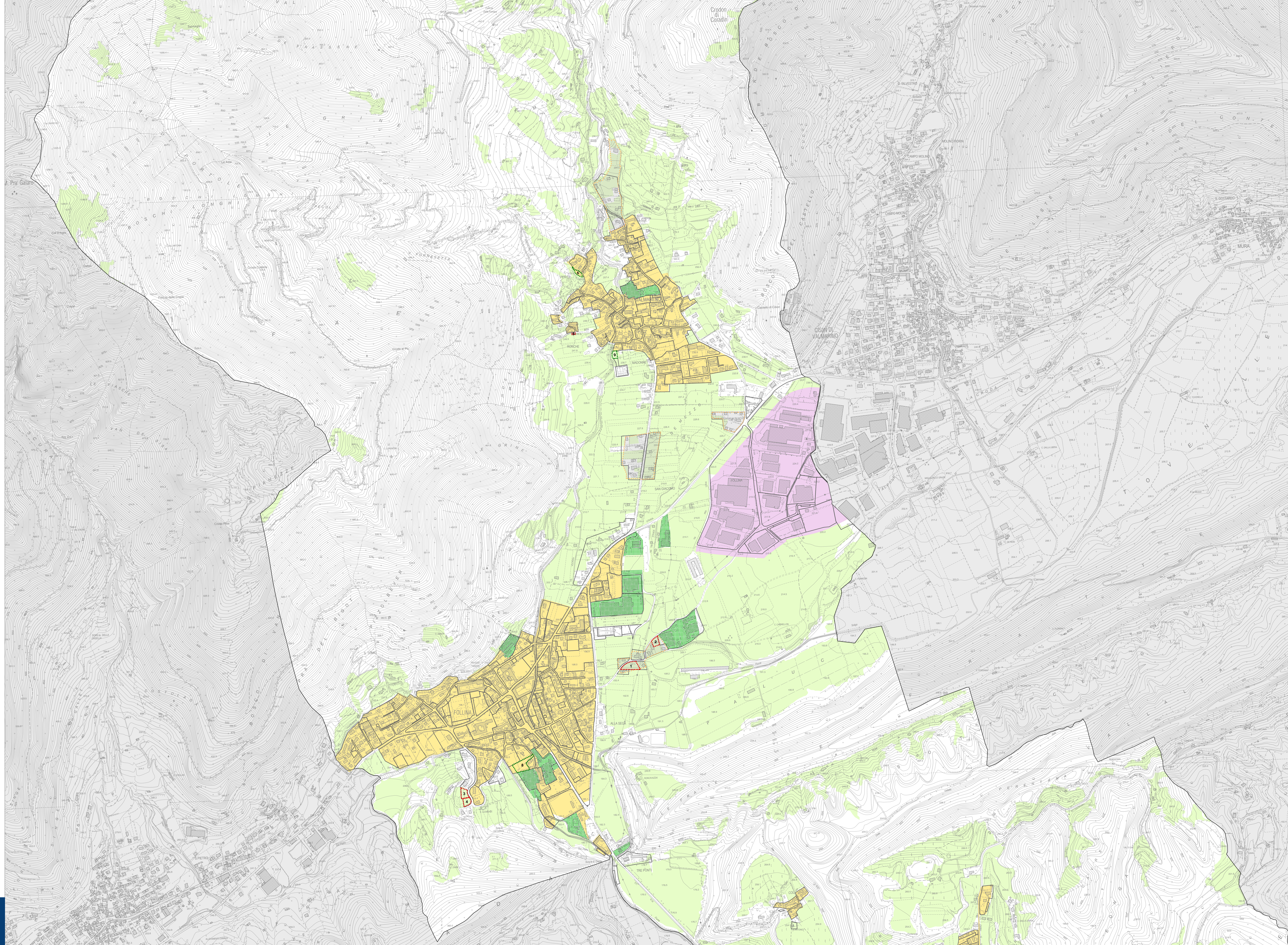


-  Limite amministrativo Comune di Follina
  -  Perimetro di zona territoriale omogenea (ZTO)
  -  Area di urbanizzazione consolidata a prevalente destinazione residenziale - PATI
  -  Area di urbanizzazione consolidata a prevalente destinazione produttiva ampliatrice - PATI
  -  Area di riqualificazione e riconversione - PATI
  -  Edificazione diffusa - PATI
  -  Superficie Agricola Utilizzata (S.A.U.)
- 
- SAU e SAT - Pp n. 1**
  - Art. 4  Superficie Agricola Trasformabile - CONSUMO
  - Art. 4  Superficie Agricola Trasformabile - RECUPERO



# legenda